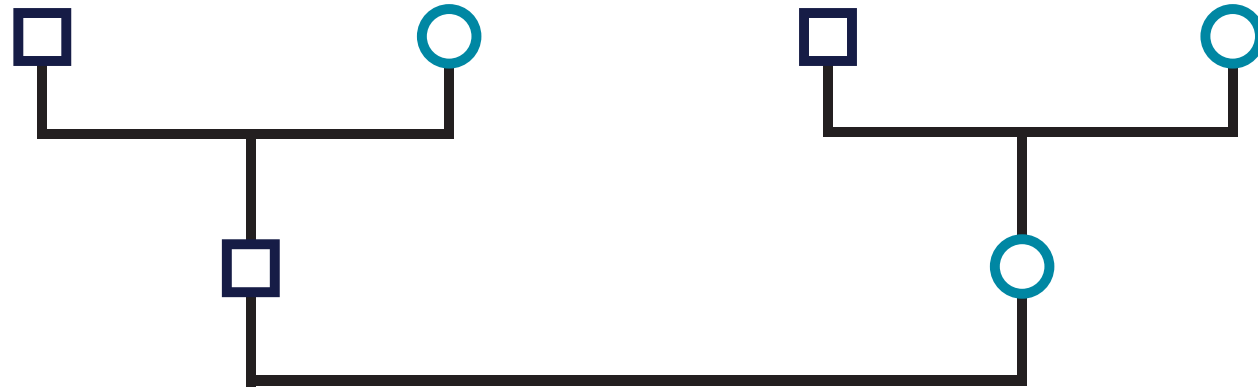
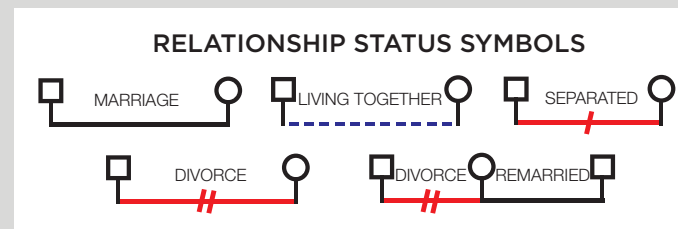
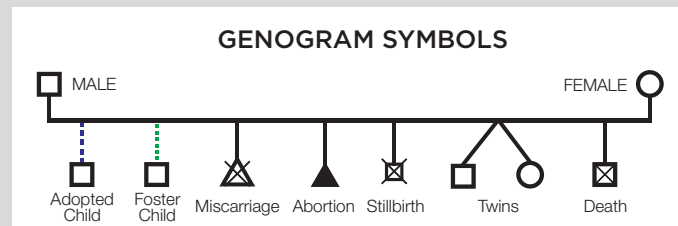


GENOGRAM YOUR FAMILY



RELATIONSHIP	RELATIONAL DYNAMICS	SYMBOL
Conflicted	A consistent pattern where issues do not get resolved between people.	
Cut Offs	People in the family stop talking to one another or avoid contact.	
Distant/Poor	Low or minimal emotional connection between family members.	
Enmeshment	Pressure is created for family members to think, feel and act alike. There is low tolerance for people to be separate, to disagree, or be different.	
Abuse	A severe crossing of personal boundaries - whether it be sexual, emotional, or physical, severely injuring the dignity and humanity of another.	



EARTHQUAKE EVENTS

THEMES
